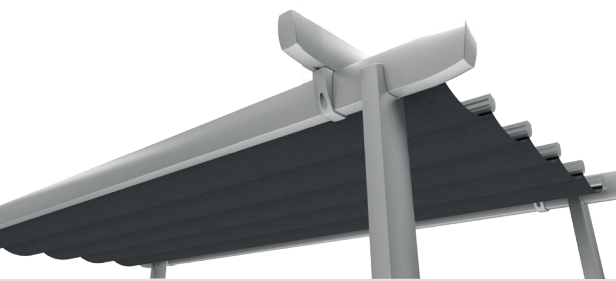




Surya
/ outdoor shading

 **HIGHLAND
SHUTTERS**
BLINDS | DOORS | CURTAINS | AWNINGS



Surya

/ outdoor shading

Maximum size (mm)

5,000(W) x 5,000(P)
x 2,800(H)

Various options are illustrated on this page. Please contact your retailer for a complete range of options available.

The Surya is a sophisticated roman roof shading system that will add class and style to any outdoor area.

Either freestanding, attached to a wall, or fitted to existing structures, the Surya is manually operated with a rope and pulley allowing for quick and easy light and shade control.

Standard colour is white.

Powder coating is available at a surcharge.



Basic structure options



Mounted between walls or
own structure



Wall-mounted with front legs
(verandah)



Free standing with four legs



02 4622 1195

highlandshutters.com.au

sales@highlandshutters.com.au

1/8-20 Anderson Rd, Smeaton Grange NSW 2570

**HIGHLAND
SHUTTERS**
BLINDS | DOORS | CURTAINS | AWNINGS